



THE NEW
UC-5000

A MASTERPIECE
IN MOBILITY

DESIGNED SPECIFICALLY
TO ADDRESS THE
URGENT NEED IN URGENT CARE

THE UC X-RAY ISSUE

The Urgent Care X-Ray issues

- Current routine is to purchase a High-Power Radiographic system that is installed as an “X-Ray ONLY” room
- Need for dedicated X-ray room (with separate control room)
- High site preparation cost incurred
 - Installation of high power AC line (230V)
- Installation of full lead shielding for this room
- Inability in utilizing this room for other clinical needs

OUR UC SOLUTION

Key Advantages Include

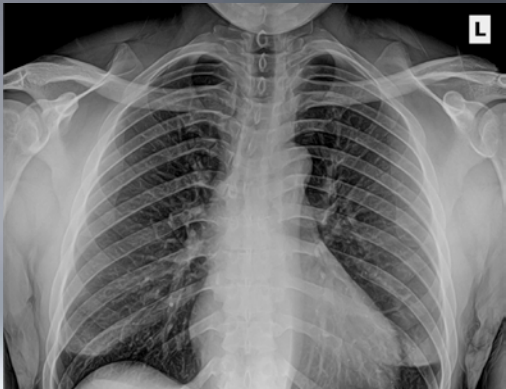
- Minimal space requirement (as little as 8' x 10')
- No special power requirements (standard 115V)
- Significant savings in both initial cost and service expense
- Minimal/no site preparation expense

Additional Advantages

- Fully touchscreen, direct digital and wireless
- Full turnkey – “Plug and Play” X-Ray solution specifically designed for the Urgent Care arena

NO
DEDICATED
X-RAY ROOM
NEEDED

UNSURPASSED IMAGE QUALITY.
SMALL MOBILE UNIT.



SPECIFICATIONS

Generator

- High frequency resonant inverter (5kW)
- Closed loop regulation
- Input Voltage: 115VAC, 60 Hz / 230VAC, 50 Hz
- kVp Range: 40 – 110 adjustable in 1 kV increments
- Indicators: Digital display of kVp, mAs and Exposure Time X-Ray, Ready, mA Station and Fault indicators
- Minimum Inherent Filtration:
 - 3.6 mm of aluminum equivalent at 100 kVp
 - 3.9 mm of aluminum equivalent at 110 kVp
- Exposure Switch: Detachable two-position

Collimator

- Laser Crosshairs for center locator
- 24VDC LED Lamp
- Retractable Tape Measure for SID Measurement
- Inclinator for Angle Measurement

X-Ray Tube

- Stationary Anode: 130 kVp
- Target Angle: 15°
- Target Material: Tungsten
- Focal Spot: 1.2 mm

Computer

- AIO 22" Touch Screen Medical Grade
- Intel i5, 4GB, 120SSD
- Microsoft Windows 7 Professional 64bit
- Internal Battery, 60 Minute run time
- Intel Wireless-N 7260AC
- EN60601-1 Medical Certified
- UL60950, FCC Class B

Wireless Panel Case

- Splashproof Housing
- Convenient carry handle
- Removable back for easy battery changes

Wireless Digital Panel

- Amorphous Silicon
- Cesium Scintillator
- Cassette Sized: 14 x 17
- Weight: 7.7 lbs
- Construction: Carbon Fiber
- Pixel Matrix: 2304 x 2800
- Resolution: 3.3 lp / mm
- Battery: Lithium Ion
- Dual Battery Charger

Acquisition Workflow Management

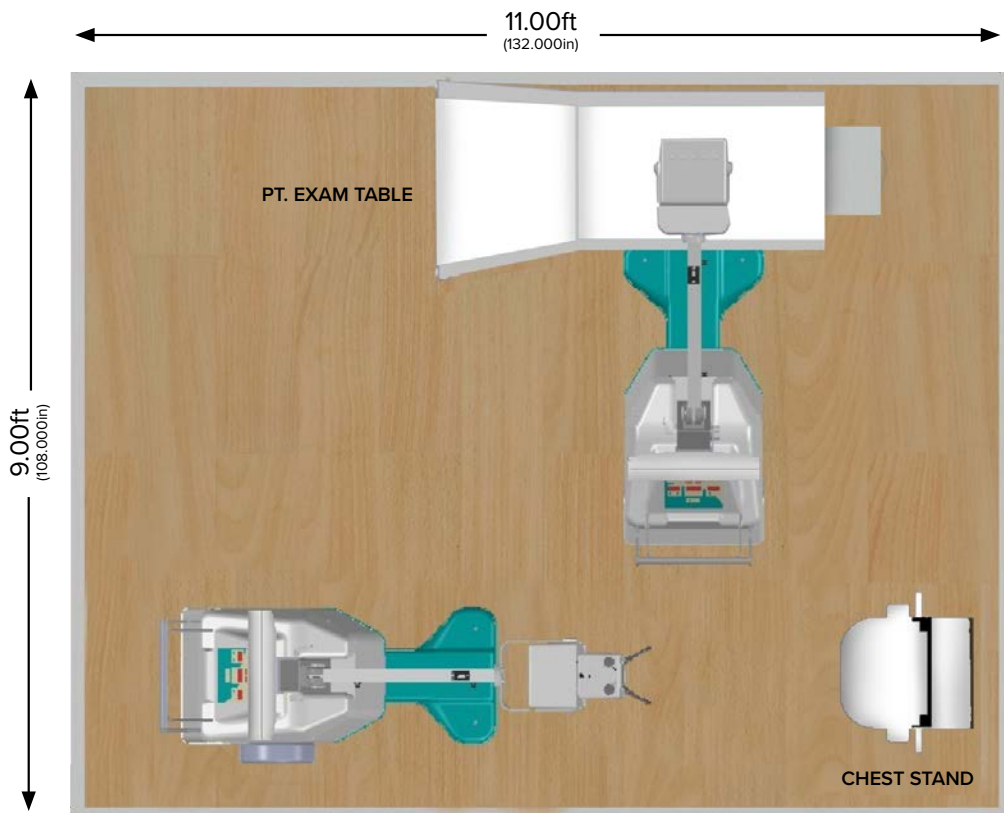
- Streamline based workflow optimal for maximum throughput
- Automatic setting of acquisition parameters according to body part
- Patient data entry: manually or automatically from the DICOM worklist (MWL HL7 May be required)
- Urgent patient registration
- Preview image typically within 4-5 seconds after exposure
- Exam specific image processing for optimized image quality
- Automatic backup of operator accepted images.
- Review & Processing
- Patient review
- Window/Level, Reverse Black/White (Window polarity inversion)
- Image rotation
- Electronic zoom with pan & scroll capabilities
- Magnifying glass
- Multi-scale contrast enhancement and Dynamic Range
- Electronic shutter for masking of image (cropping)
- Multi-format display (for printing)
- DICOM Store: Interface to DICOM storage servers
- DICOM Print
- DICOM HIS/RIS MWM: Interface to Hospital/Radiology Information System's Modality Worklist

Complies with CFR 21 subchapter J



Specifications are subject to change without notice

TYPICAL UC-5000 ROOM CONFIGURATION



SOURCE-RAY, INC.
50 FLEETWOOD CT
RONKONKOMA, NY 11779
P: (631) 244-8200
x_raysales@sourceray.com
SourceRay.com

