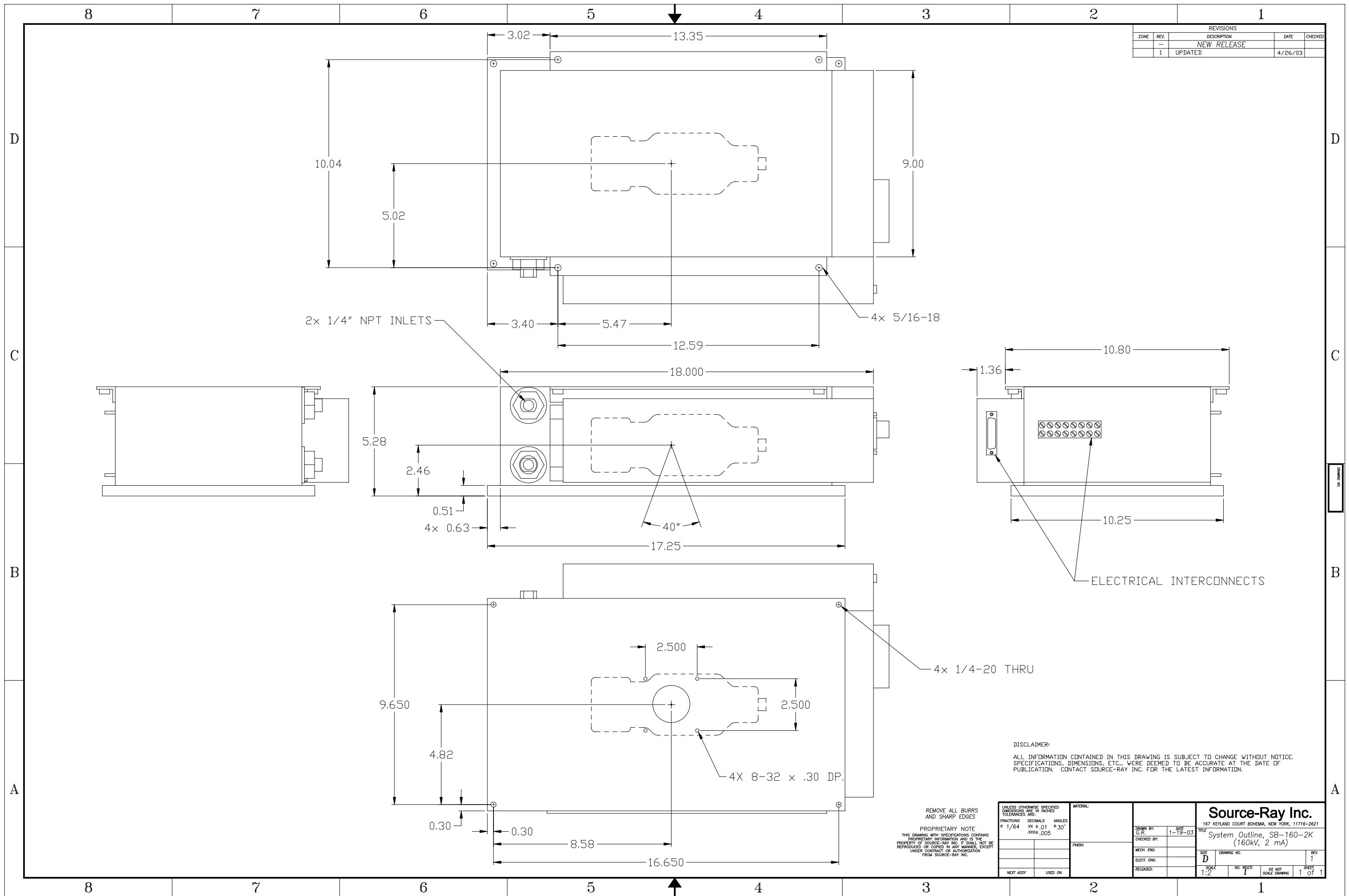


REVISIONS				
ZONE	REV.	DESCRIPTION	DATE	CHECKED
	-	NEW RELEASE		
	1	UPDATED	4/26/03	



DISCLAIMER:
 ALL INFORMATION CONTAINED IN THIS DRAWING IS SUBJECT TO CHANGE WITHOUT NOTICE. SPECIFICATIONS, DIMENSIONS, ETC., WERE DEEMED TO BE ACCURATE AT THE DATE OF PUBLICATION. CONTACT SOURCE-RAY INC. FOR THE LATEST INFORMATION.

REMOVE ALL BURRS AND SHARP EDGES
 PROPRIETARY NOTE
 THIS DRAWING WITH SPECIFICATIONS CONTAINS PROPRIETARY INFORMATION AND IS THE PROPERTY OF SOURCE-RAY INC. IT SHALL NOT BE REPRODUCED OR COPIED IN ANY MANNER, EXCEPT UNDER CONTRACT OR AUTHORIZATION FROM SOURCE-RAY INC.

UNLESS OTHERWISE SPECIFIED DIMENSIONS ARE IN INCHES TOLERANCES ARE:		FRACTIONS		DECIMALS		ANGLES		MATERIAL:		FINISH:		DRAWN BY:		DATE		TITLE	
		# 1/64		.XX # .01		± 30'						G.R.		1-19-03		167 KEYLAND COURT BOHEMIA, NEW YORK, 11716-2621	
		.XXX# .005										MECH. ENG:				System Outline, SB-160-2K (160kV, 2 mA)	
												ELECT. ENG:				1 of 1	
												RELEASED:				1 of 1	

Source-Ray Inc.

167 KEYLAND COURT BOHEMIA, NEW YORK, 11716-2621

System Outline, SB-160-2K (160kV, 2 mA)

1 of 1